

## Year 7

### Still Life & The Formal Elements



Name:

Tutor Group:

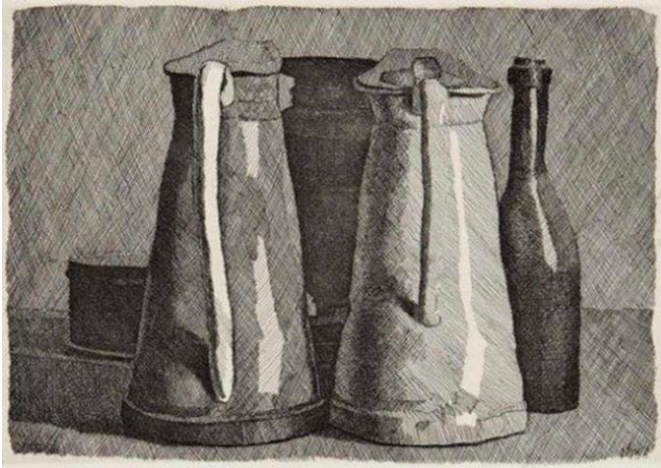
Class:

Date set: Monday 2 March Due: Monday 9 March

Parent/Carer Comment

Staff Comment

Target



# The Formal Elements of Art

Can you describe what TONE is?

---

---

Can you describe what SHAPE is?

---

---

Can you describe what FORM is?

---

---

Can you describe what TEXTURE is?

---

---

Can you describe what PATTERN is?

---

---

Can you describe what COLOUR is?

---

---

Can you describe what LINE is?

---

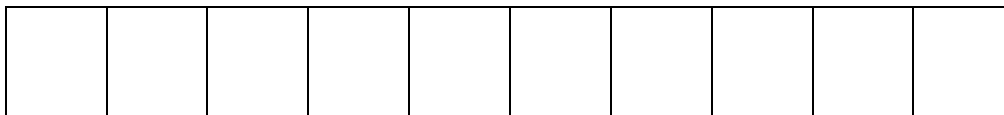
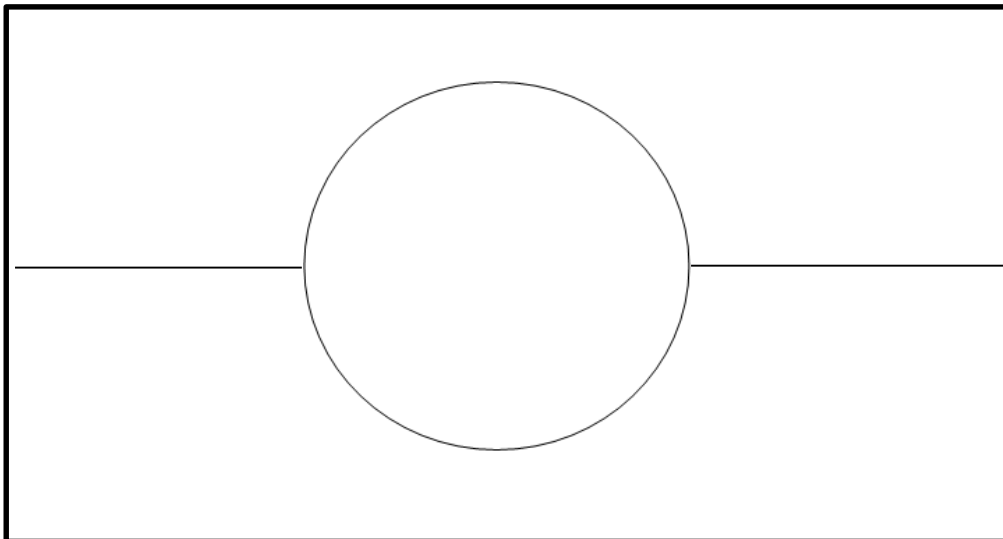
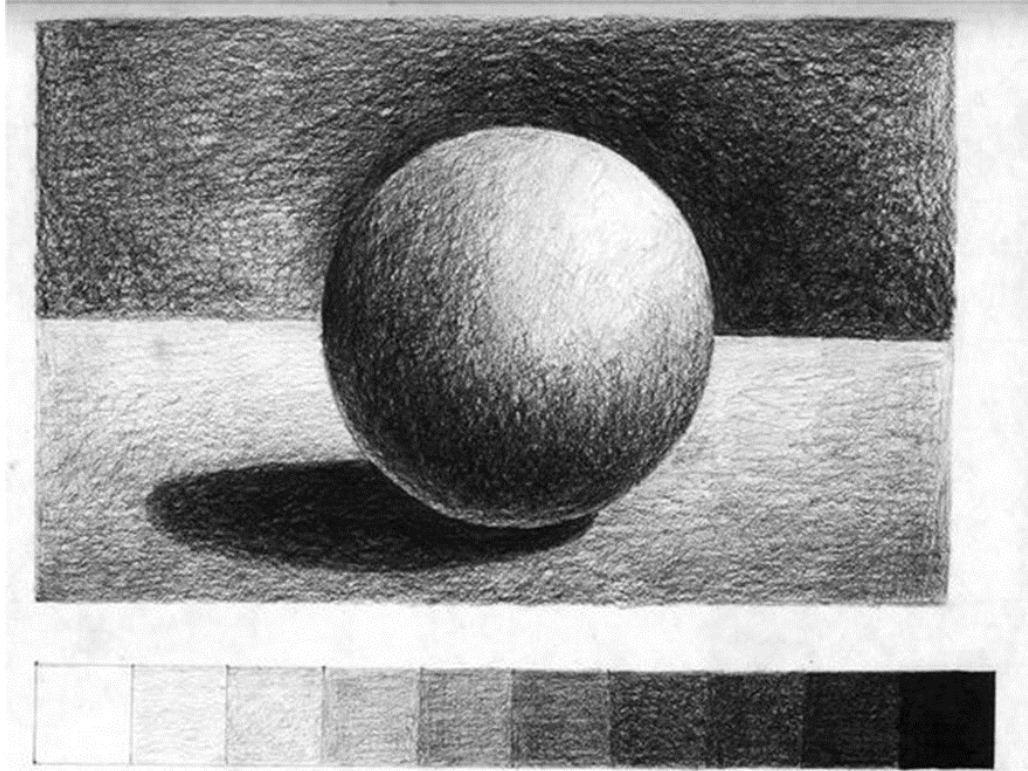
---



## Using Tone – Carefully observe this tonal image of a sphere...

**Task:** You must firstly create your own tonal range (using a sharp pencil). Then, once you have mastered the technique, you must apply your skills to complete your own sphere diagram.

*Top tip – Make sure you carefully observe the shadows and highlights of the first image!*

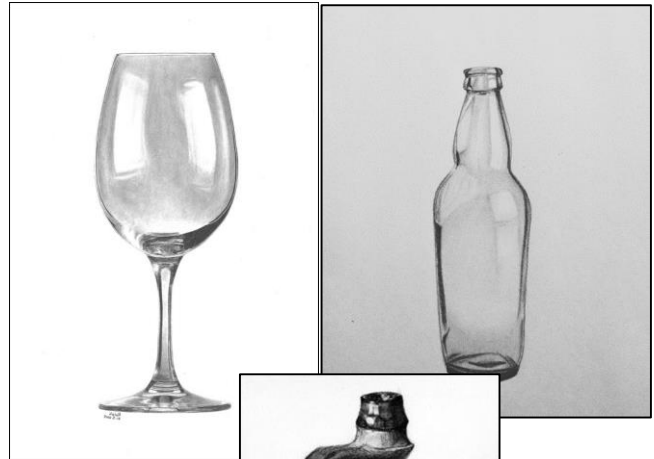


## Drawing Still Life

Task: In the space below you must draw a cylindrical object from home.

This could be a drinking glass, bottle, vase, jug etc.

Start with a line drawing, then begin to add tone to create a 3D effect.



Examples of cylindrical objects...

